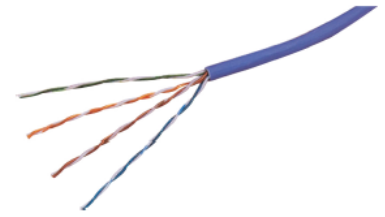


Cat5e UTP LSOH Violet Technical Data Sheet

Operation Temperature Range	Bending Radius	Nominal Overall Diameter
-20°C to +60°C	4 x OD installed 8 x OD installing	5.2mm



Conductor:	Solid copper, 24AWG
Insulation:	PE (Polyethylene)
Pairs:	Pair1: Blue, White/Blue Pair2: Orange, White/Orange Pair3: Green, White/Green Pair4: Brown, White/Brown
Sheath:	Violet, LSOH (Low Smoke Zero Halogen)
Standard:	Performance standards : ISO/IEC 11801:2011, IEC 61156-5:2009, EN50173-1:2011, EN 50173-2:2007+A1:2010, EN 50288-3-1:2013, ANSI/TIA-568-C.2:2009. Standards for flammability, acidity and smoke : IEC 60332-1-[1,2]:2004, IEC 60754-[1,2], IEC 61034-[1,2], EN 50267-2-2, (Superseded by IEC 60754-[1,2])

Frequency (MHz)	Insertion Loss (dB)	NEXT (dB)	Return Loss (dB)	ACR-N (dB)	ACR-F (dB)	PS NEXT (dB)	PS ACR-F (dB)
1.0	2	62	20	60	64	62	64
4.0	3.8	53	23	49.2	52	53	51
10.0	6.5	47	25	40.5	44	47.3	44
16.0	8.2	44	25	35.8	39.9	44.2	40.9
20.0	9.2	43	25	33.8	38	42.8	39
31.25	11.7	40	23.6	38.3	34.1	39.9	35.1
62.5	17	35	21.5	18	28.1	35.4	29.1
100.0	22	32	20.1	10	24	32.3	25