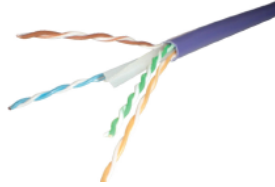


## CAT6 UTP LSOH EXCEL Violet Technical Data Sheet



Installation Temperature Range	Operating Temperature Range	Bending Radius	Nominal Overall Diameter	Impedance
0°C to +60°C	-20°C to +75°C	4 x OD installed 8 x OD during installing	6.2mm	100 ± 15 Ω

<b>Conductor:</b>	Solid copper, 23AWG
<b>Insulation:</b>	PE (Polyethylene)
<b>Pairs:</b>	Pair1: Blue, White/Blue Pair2: Orange, White/Orange Pair3: Green, White/Green Pair4: Brown, White/Brown
<b>Sheath:</b>	Violet, LSOH (Low Smoke Zero Halogen)
<b>Standards:</b>	TIA/EIA 568-B.2-1, EN50173-1 and ISO/IEC 11801 Flame retardant to IEC 60332-1-[1,2] (2004-07), IEC 60754-(1,2), IEC 61034-(1-2) Cable jacket tested to IEC 62321, US EPA 3540C, BS EN 14582

Frequency (MHz)	Max. IL (dB)	NEXT (dB)	MIN. RL (dB)	Min. ACR-F (dB)	Min. PS NEXT (dB)	Min PS ACR-F (dB)
1	1.9	88.9	28	85.2	88.5	80.1
4	3.6	83.7	37.2	83.4	77.7	73.3
10	5.7	67.6	41.8	75	66.5	63.7
16	7.3	70.1	48.4	70.6	66.8	57.2
20	8.2	71.9	46.3	64.9	63.9	55.1
31.25	10.3	63.4	38.2	66.1	61.6	55.9
62.5	14.7	60.9	35.8	46.6	59.4	45.2
100	18.8	56.2	29.5	43.1	54.3	39.3
200	27.2	55.1	24.9	38.9	51	34.9
250	30.2	50.9	23.8	29.3	50.5	26.3